

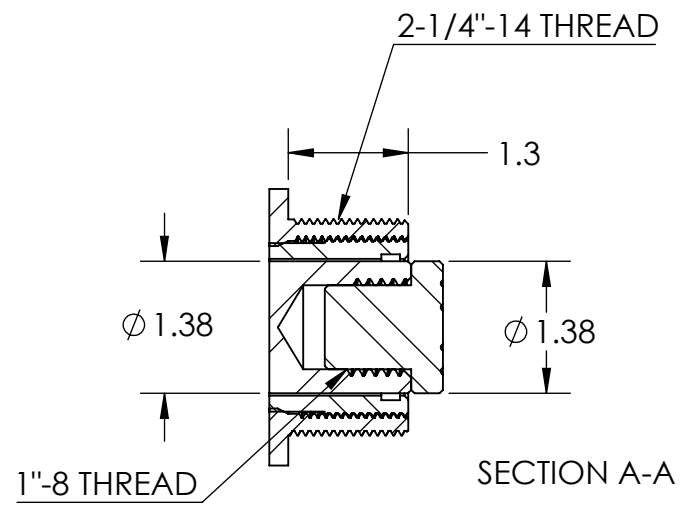
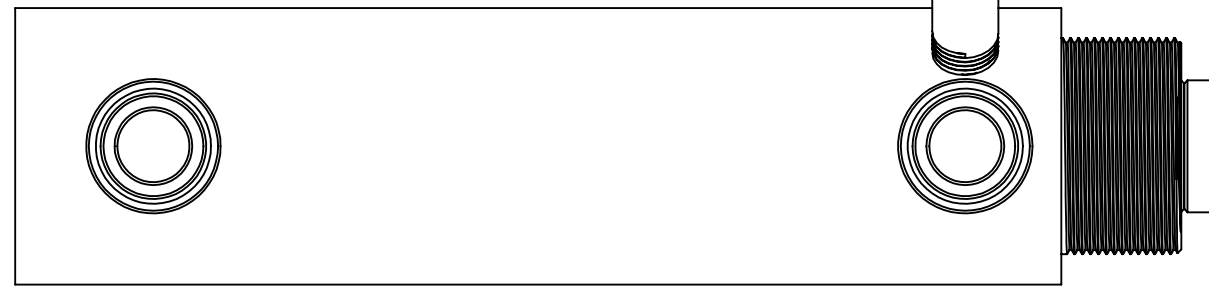
4

3

2

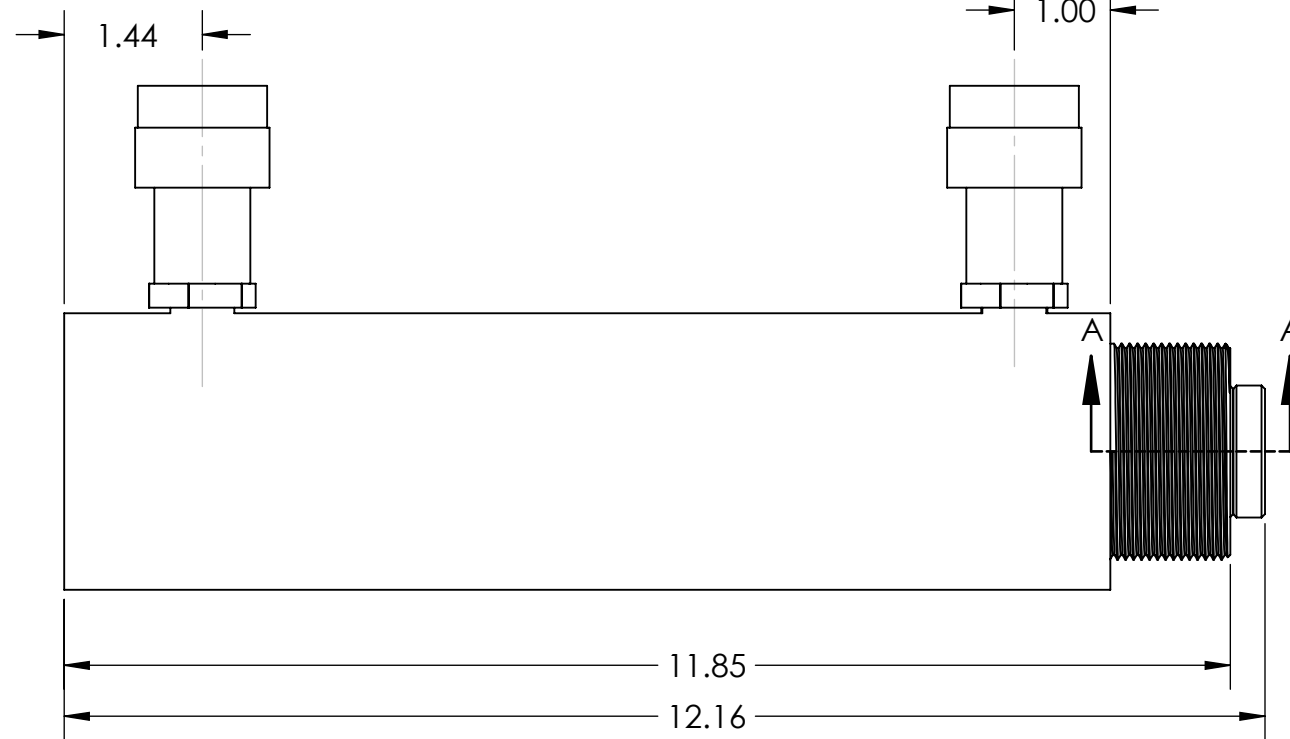
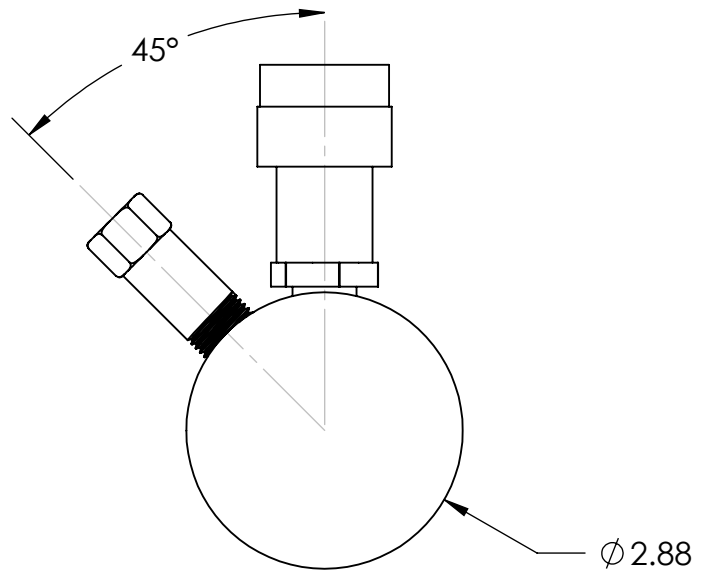
1

RELIEF VALVE



NOTES:

1. SEALS ARE NOT SHOWN.
2. THREAD PROTECTOR NOT SHOWN.
3. ROD DIAMETER: 1.38"
4. BORE DIAMETER: 1.69"
5. ROD EFFECTIVE AREA: 0.76 SQ.IN.
6. BORE EFFECTIVE AREA: 2.23 SQ.IN.
7. ROD OIL VOLUME: 4.6 CU.IN.
8. BORE OIL VOLUME: 13.5 CU.IN.
9. RETRACT FORCE: 4 TONS
10. EXTEND FORCE: 10 TONS



UNLESS OTHERWISE SPECIFIED:  
DIMENSIONS ARE IN INCHES.

TOLERANCES:  
 FRACTIONAL  $\pm 1/16$   
 ANGLES  $\pm 1^\circ$   
 TWO PLACES  $\pm 0.010$  (.25mm)  
 THREE PLACES  $\pm 0.005$  (.13mm)  
 FOUR PLACES  $\pm 0.001$  (.02mm)  
 FINISH 125 MAX  
 C/B .020

MATERIAL  
Material <not specified>  
FINISH

DO NOT SCALE DRAWING

THIRD ANGLE PROJECTION

**PROPRIETARY AND CONFIDENTIAL**

THE INFORMATION CONTAINED IN THIS DRAWING IS THE SOLE PROPERTY OF PowerX International. ANY REPRODUCTION IN PART OR AS A WHOLE WITHOUT THE WRITTEN PERMISSION OF PowerX International IS PROHIBITED.

	NAME	DATE
DRAWN		12/21/2017
CHECKED		
ENG APPR.		
MFG APPR.		
Q.A.		
COMMENTS:		
PROJECT:		

TITLE:		
SIZE	DWG. NO.	REV
<b>B</b>	CD10-6 - Install	<b>B</b>
SCALE: 1:2	WEIGHT: 18.28	SHEET 1 OF 1

REV.	ECN.	DATE	DRAWNBY	DESCRIPTION	APPROVED	APPR. DATE
B	C18-06-062	6/6/2018	JJJ	UPDATED FILE NAME	JJJ	6/6/18
REVISIONS						

4

3

2

1

B

B

A

A