

4

3

2

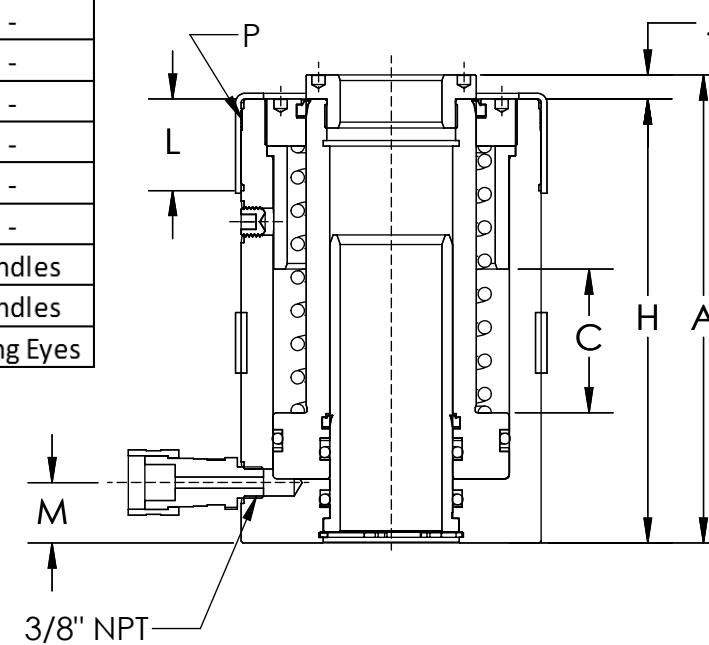
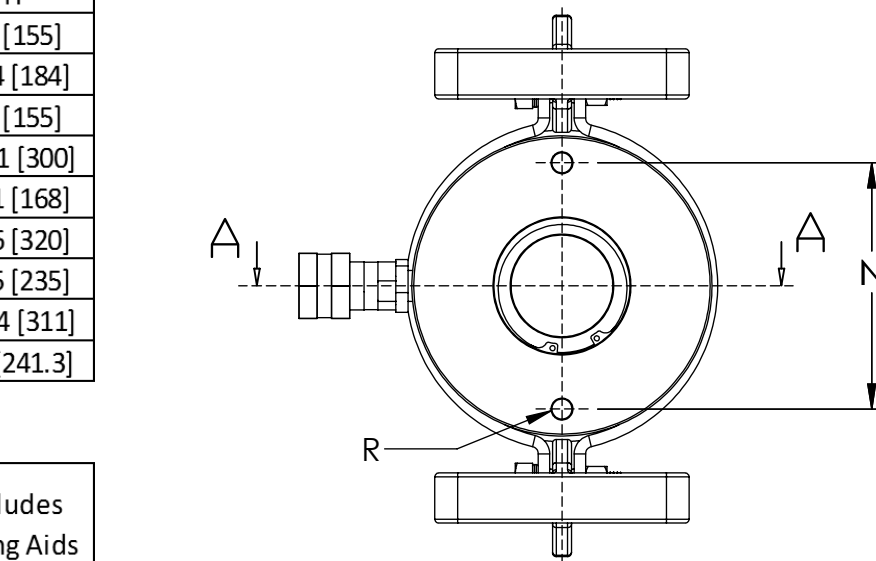
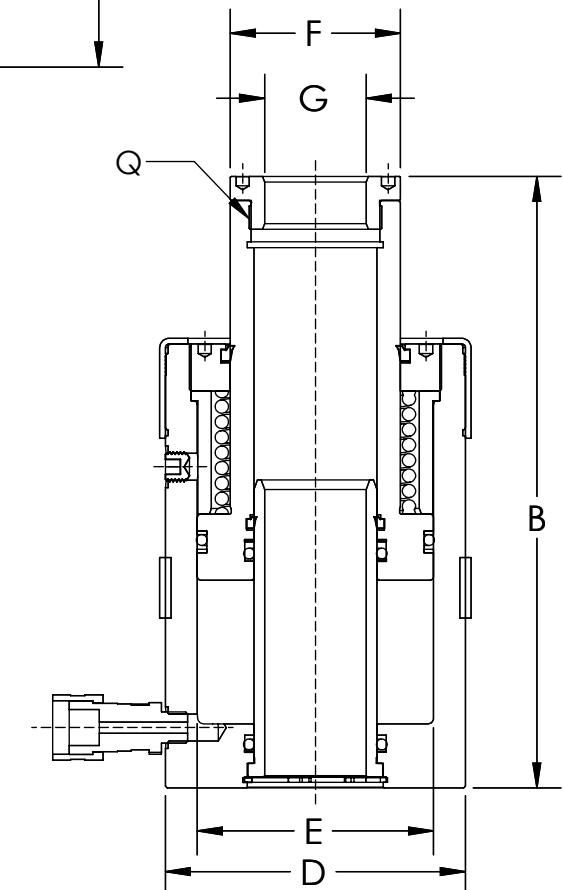
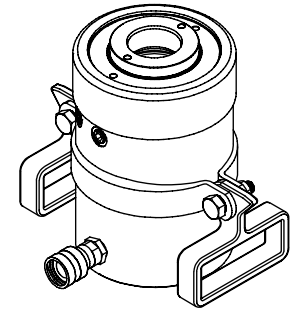
1

Item	Stroke	Collapsed Height	Extended Height	Stroke	Outside \varnothing	Bore \varnothing	Rod \varnothing	Hole Thru \varnothing	Body Height
		A	B						
C12-2	2	4.72 [120]	6.38 [162]	1.65 [42]	2.72 [69]	2.13 [54]	1.38 [35]	0.77 [19.6]	6.1 [155]
C12-3	3	7.24 [184]	10.24 [260]	2.99 [76]	2.72 [69]	2.13 [54]	1.38 [35]	0.77 [19.6]	7.24 [184]
CH20-2	2	6.38 [162]	8.35 [212]	1.97 [50]	3.88 [98.6]	2.87 [73]	2.13 [54]	1.06 [27]	6.1 [155]
CH20-6	6	6.38 [162]	18.19 [462]	6.1 [155]	3.88 [98.6]	2.87 [73]	2.13 [54]	1.06 [27]	11.81 [300]
CH30-2	2	7.01 [178]	9.53 [242]	2.52 [64]	4.5 [114.3]	3.54 [90]	2.48 [63]	1.31 [33.3]	6.61 [168]
CH30-6	6	12.99 [330]	19.11 [485.5]	6.12 [155.5]	4.5 [114.3]	3.54 [90]	2.48 [63]	1.31 [33.3]	12.6 [320]
CH60-3	3	9.75 [247.7]	12.74 [323.7]	2.99 [76]	6.25 [158.8]	4.92 [125]	3.54 [90]	2.12 [53.8]	9.25 [235]
CH60-6	6	12.74 [323.7]	18.77 [476.7]	6.02 [153]	6.25 [158.8]	4.92 [125]	3.54 [90]	2.12 [53.8]	12.24 [311]
CH100-3	3	10 [254]	12.99 [330]	2.99 [76]	8.39 [213]	6.5 [165]	4.92 [125]	3.11 [79]	9.5 [241.3]

Item	Stroke	Saddle Height	Thread Length	Base to Adv Port	Bolt Circle	Collar Threads	Rod Threads	Bolt Threads	Includes Lifting Aids
		J	L	M	N	P	Q	R	
C12-2	2	-	1.18 [30]	0.98 [25]	-	2-3/4"-16	3/4"-16 UN	-	-
C12-3	3	-	1.18 [30]	0.98 [25]	2 [50.8]	2-3/4"-16	-	5/16"-18 UNC	-
CH20-2	2	0.28 [7]	1.5 [38]	0.75 [19]	3.25 [82.6]	3-7/8"-12	1-9/16"-16	3/8"-16 UNC	-
CH20-6	6	0.28 [7]	1.5 [38]	0.75 [19]	3.25 [82.6]	3-7/8"-12	1-9/16"-16	3/8"-16 UNC	-
CH30-2	2	0.39 [10]	1.65 [42]	0.85 [21.6]	3.62 [92]	4-1/2"-12	1-7/8"-16	3/8"-16 UNC	-
CH30-6	6	0.39 [10]	1.65 [42]	1 [25.4]	3.62 [92]	4-1/2"-12	1-7/8"-16	3/8"-16 UNC	-
CH60-3	3	0.5 [12.7]	1.91 [48.5]	1.26 [32]	5.13 [130.3]	6-1/4"-12	2-3/4"-16	3/8"-16 UNC	Handles
CH60-6	6	0.5 [12.7]	1.91 [48.5]	1.26 [32]	5.13 [130.3]	6-1/4"-12	2-3/4"-16	3/8"-16 UNC	Handles
CH100-3	3	0.5 [12.7]	2.38 [60.5]	1.46 [37]	7 [177.8]	8-3/8"-12	4"-16	9/16"-12 UNC	Lifting Eyes

NOTES:

1. MAXIMUM OPERATING PRESSURE: 10,000 PSI

SECTION A-A
(RETRACTED)SECTION A-A
(EXTENDED)

UNLESS OTHERWISE SPECIFIED:

DIMENSIONS ARE IN INCHES.

TOLERANCES:
 FRACTIONAL $\pm 1/16$
 ANGLES $\pm 1^\circ$
 TWO PLACES ± 0.050 (.12mm)
 THREE PLACES ± 0.005 (.13mm)
 FOUR PLACES ± 0.01 (.02mm)
 FINISH 125 MAX
 C/B .020

MATERIAL

FINISH

DO NOT SCALE DRAWING

	NAME	DATE
DRAWN	JJJ	07/26/18
CHECKED		
ENG APPR.	JJJ	07/26/18
MFG APPR.		
Q.A.		

COMMENTS:

PROJECT:

TITLE:
 INSTALLATION DRAWING,
 HOLE THRU CYLINDER

SIZE DWG. NO. REV
B CHxx - Install **A**

SCALE: 1:4 WEIGHT: SHEET 1 OF 1

REV.	ECN.	DATE	DRAWNBY	DESCRIPTION	APPROVED	APPR. DATE
A	C18-07-085	7/26/18	JJJ	RELEASED	JJJ	7/26/18

REVISIONS

THIRD ANGLE
 PROJECTION

PROPRIETARY AND CONFIDENTIAL

THE INFORMATION CONTAINED IN THIS
 DRAWING IS THE SOLE PROPERTY OF
 PowerX International. ANY
 REPRODUCTION IN PART OR AS A WHOLE
 WITHOUT THE WRITTEN PERMISSION OF
 PowerX International IS PROHIBITED.

4

3

2

1