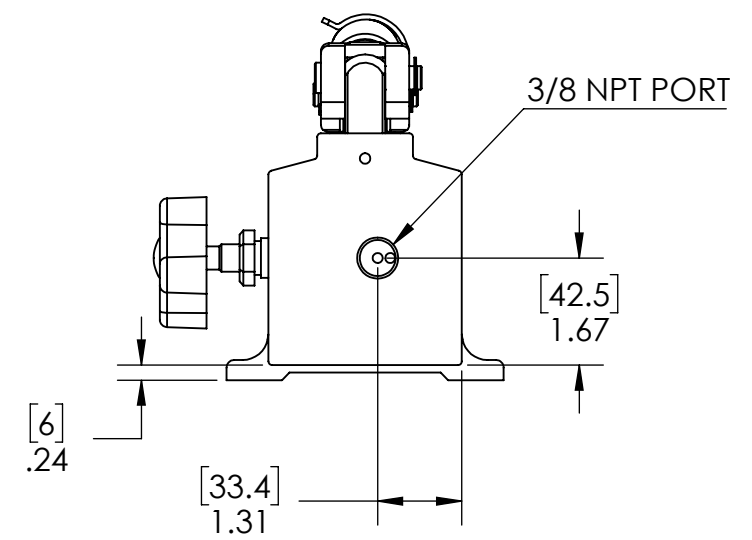
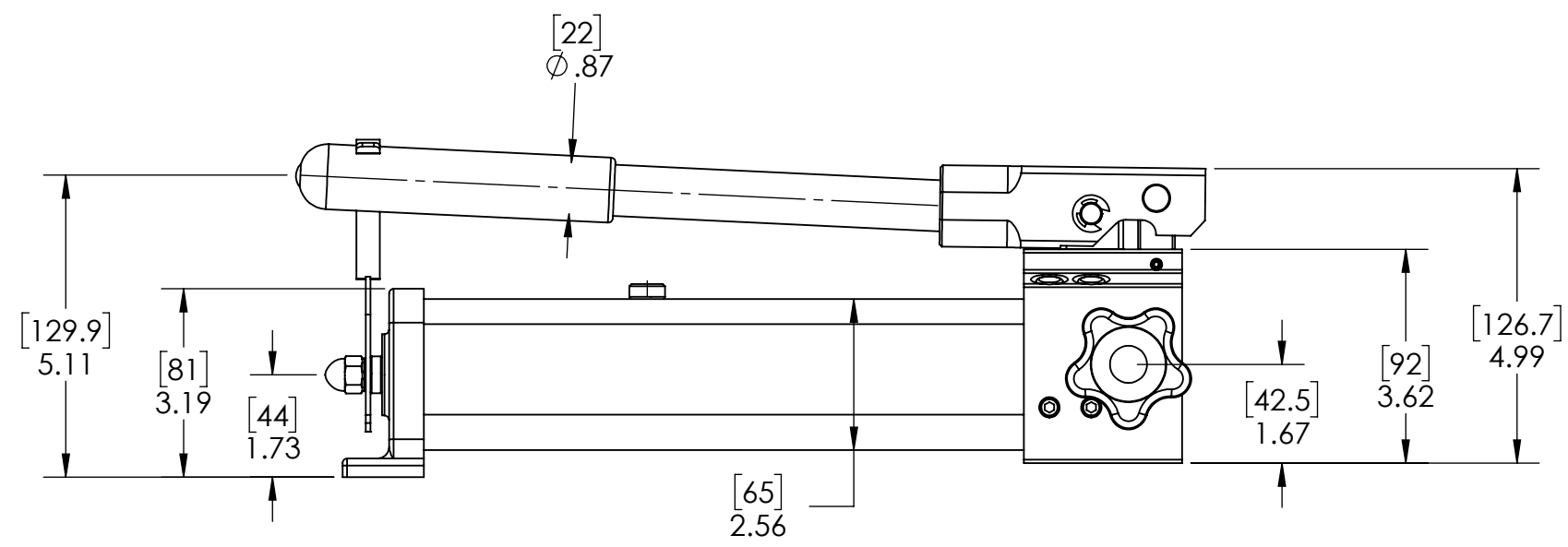
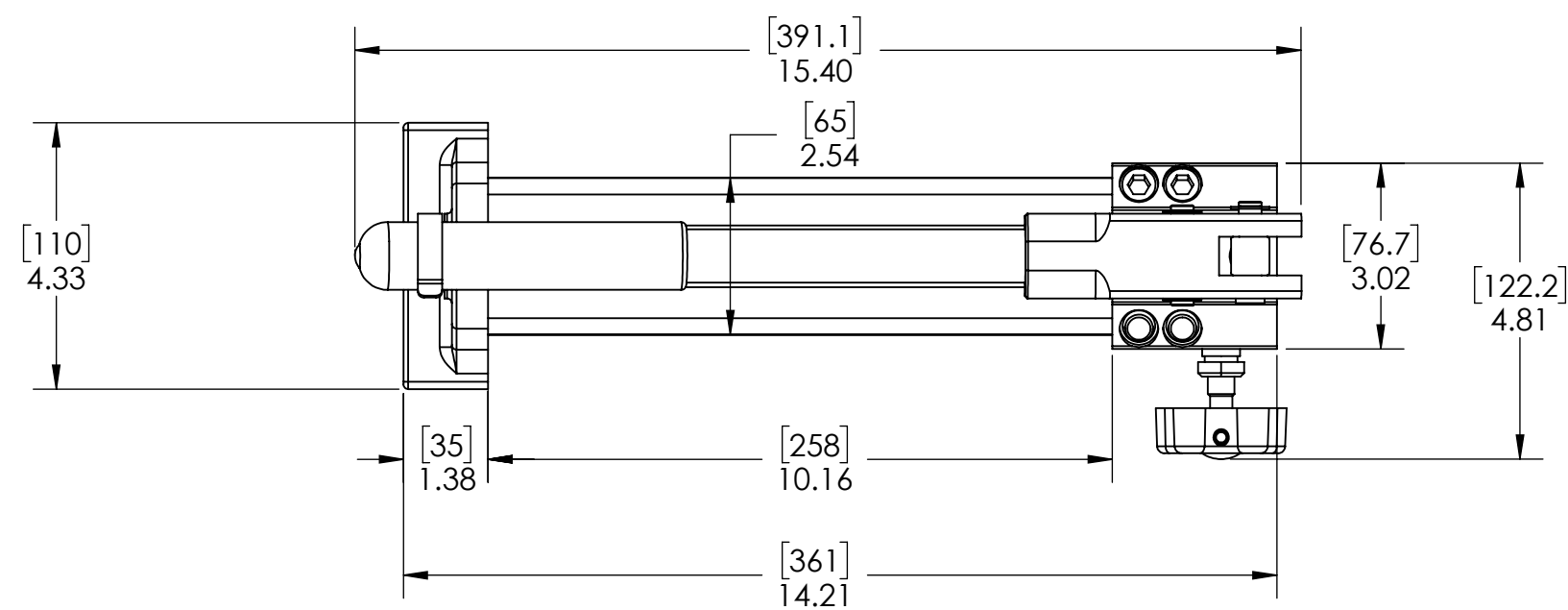


4

3

2

1



NOTES:

1. PRESSURE RATING
 1. 1ST STAGE: 10,000 PSI (700 BAR)
 2. 2ND STAGE: 300 PSI (30 BAR)
2. OIL VOLUME PER STROKE:
 1. 1ST STAGE: 0.79 CU.IN. (12.9 CC)
 2. 2ND STAGE: 0.10 CU.IN. (1.65 CC)
3. TOTAL OIL CAPACITY: 30.5 CU.IN (500 CC)
4. USABLE OIL CAPACITY: 21.4 CU.IN. (350 CC)
5. HANDLE EFFORT: 80.5 LBS. (36.5 KG)
6. PRODUCT WEIGHT WITH OIL: 5.1 LBS (2.3 KG)

UNLESS OTHERWISE SPECIFIED: DIMENSIONS ARE IN INCHES.			NAME	DATE
TOLERANCES: FRACTIONAL ±1/16 ANGLES ±1° TWO PLACES ±.010 (.25mm) THREE PLACES ±.005 (.13mm) FOUR PLACES ±.001 (.02mm) FINISH 125 MAX C/B .020			JJJ	07/26/18
MATERIAL Material <not specified> FINISH			JJJ	07/26/18
DO NOT SCALE DRAWING				

POWERX		
TITLE: PUMP,HAND,2 STAGE, ALUMINUM		
SIZE B	DWG. NO. P21L - Install	REV A
SCALE: 1:3	WEIGHT:	SHEET 1 OF 1

THIRD ANGLE PROJECTION

PROPRIETARY AND CONFIDENTIAL

THE INFORMATION CONTAINED IN THIS DRAWING IS THE SOLE PROPERTY OF PowerX International. ANY REPRODUCTION IN PART OR AS A WHOLE WITHOUT THE WRITTEN PERMISSION OF PowerX International IS PROHIBITED.

A	C18-07-085	7/26/18	JJJ	RELEASED	JJJ	7/26/18
REV.	ECN.	DATE	DRAWNBY	DESCRIPTION	APPROVED	APPR. DATE
REVISIONS						

4

3

2

1