

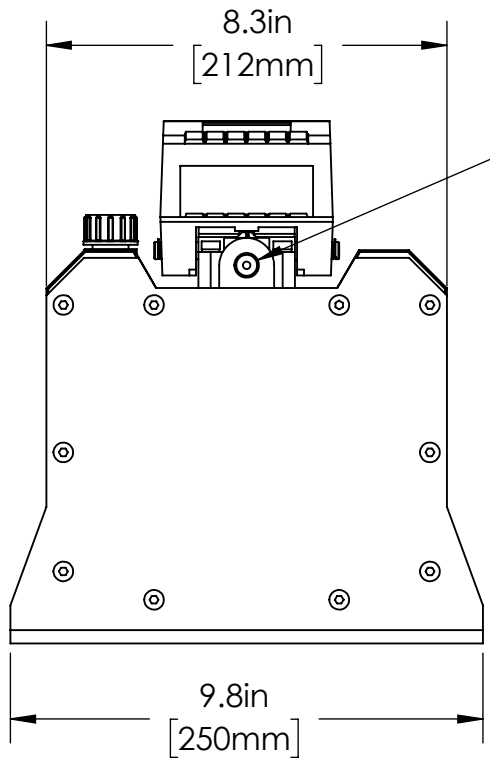
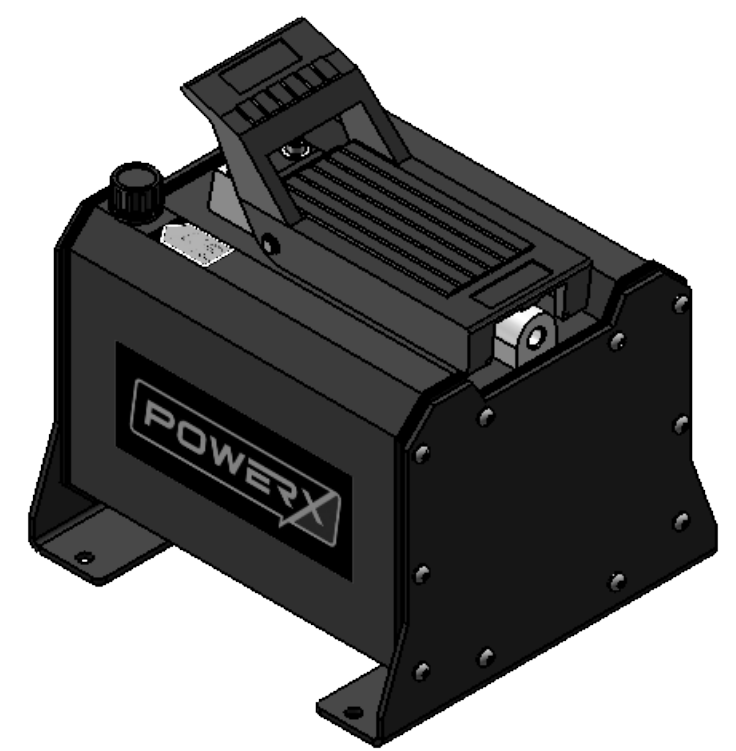
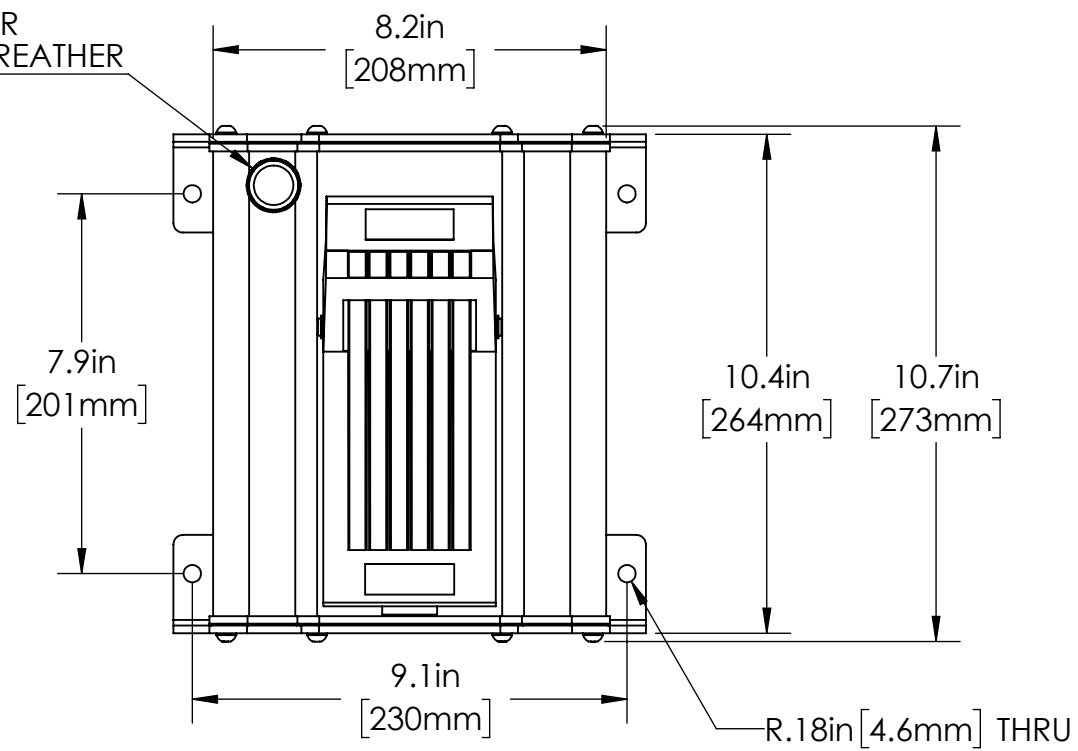
4

3

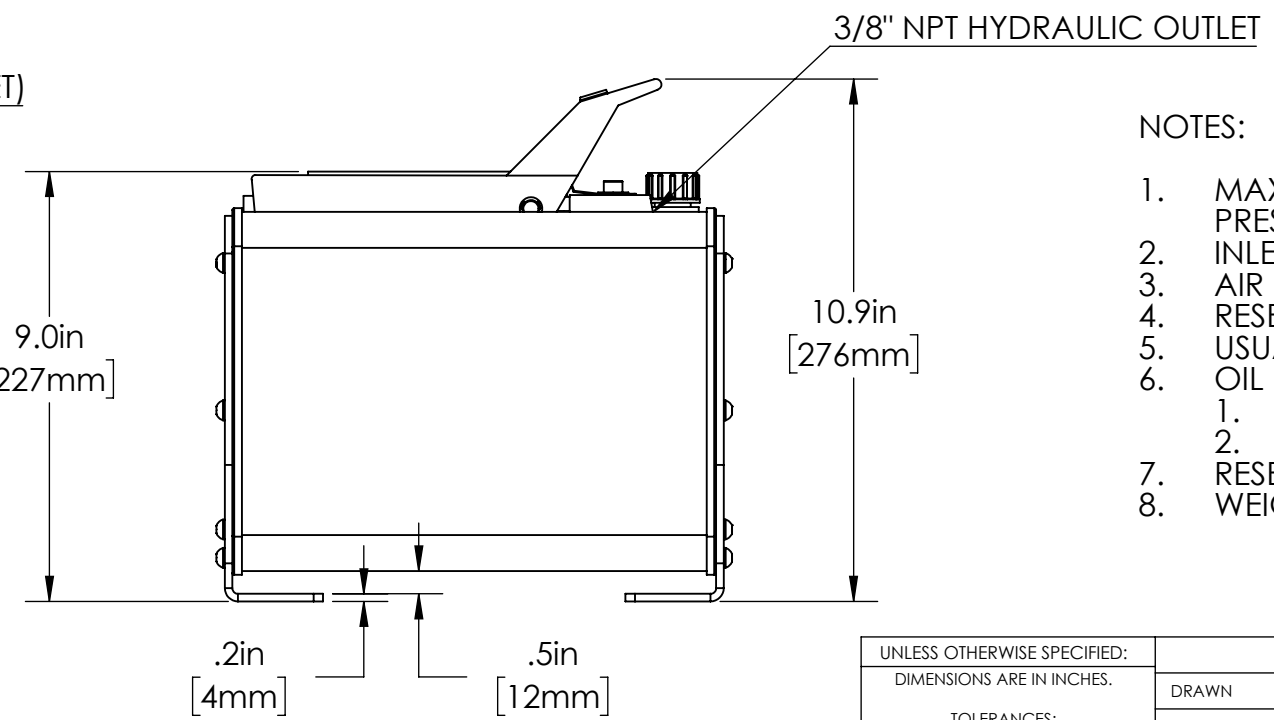
2

1

RESERVOIR FILLER / BREATHER



1/4" NPT (AIR INLET)



NOTES:

1. MAXIMUM PRESSURE RATING 10,000 PSI OTHER PRESSURES AVAILABLE UPON REQUEST.
2. INLET AIR PRESSURE: 40 TO 170 PSI
3. AIR EXHAUST MUFFLE INCLUDED.
4. RESERVOIR OIL CAPACITY, APPROX. 395 CU.IN.
5. USUABLE OIL VOLUME, APPROX. 231 CU.IN.
6. OIL FLOW:
 1. NO LOAD: 82 CU.IN./MIN
 2. 10,000 PSI: 13 CU.IN./MIN
7. RESERVOIR, EXTRUDED ALUMINUM ALLOY
8. WEIGHT: APPROX. 32 LBS, INCLUDING OIL

UNLESS OTHERWISE SPECIFIED:
 DIMENSIONS ARE IN INCHES.
 TOLERANCES:
 FRACTIONAL ±1/16
 ANGLES ±1°
 ONE PLACES ±.050 (1.25mm)
 TWO PLACES ±.010 (.25mm)
 THREE PLACES ±.005 (.13mm)
 FINISH 125 MAX
 C/B .020

THIRD ANGLE PROJECTION
 PROPRIETARY AND CONFIDENTIAL
 THE INFORMATION CONTAINED IN THIS DRAWING IS THE SOLE PROPERTY OF PowerX International. ANY REPRODUCTION IN PART OR AS A WHOLE WITHOUT THE WRITTEN PERMISSION OF PowerX International IS PROHIBITED.

MATERIAL
 FINISH
 DO NOT SCALE DRAWING

	NAME	DATE
DRAWN	JJJ	03/29/18
CHECKED		
ENG APPR.	JJJ	05/07/18
MFG APPR.		
Q.A.		
COMMENTS:		

POWERX

TITLE:
INSTALLATION DRAWING, PA6-231

SIZE	DWG. NO.	REV
B	PA6-231-Install	A
SCALE: 1:4		WEIGHT:
		SHEET 1 OF 1

REV.	ECN.	DATE	DRAWNBY	DESCRIPTION	APPROVED	APPR. DATE
A	C18-05-053	5/7/2018	JJJ	RELEASED	JJJ	05/07/18
REVISIONS						

4

3

2

1

B

B

A

A