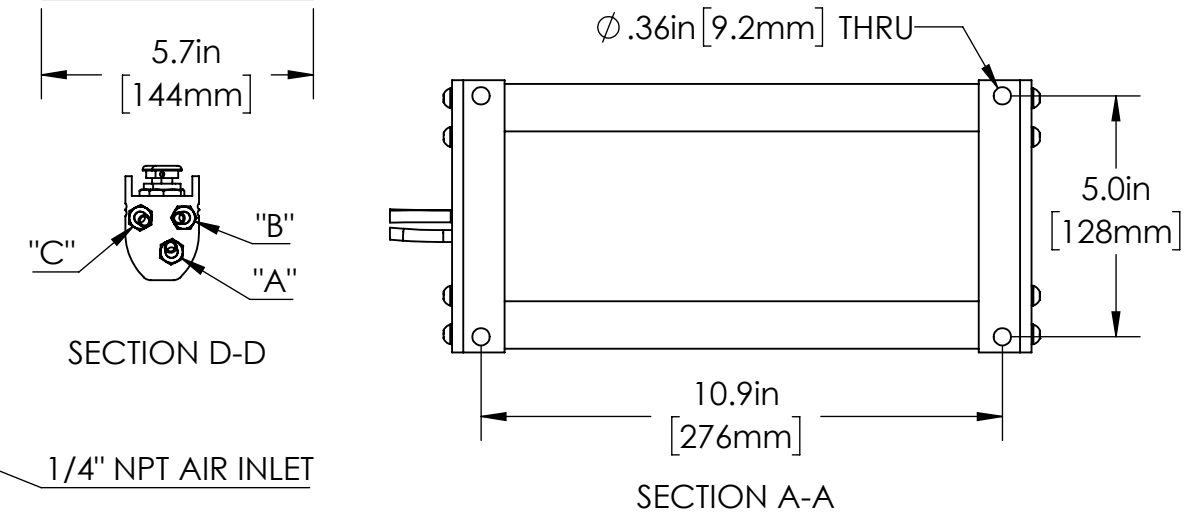
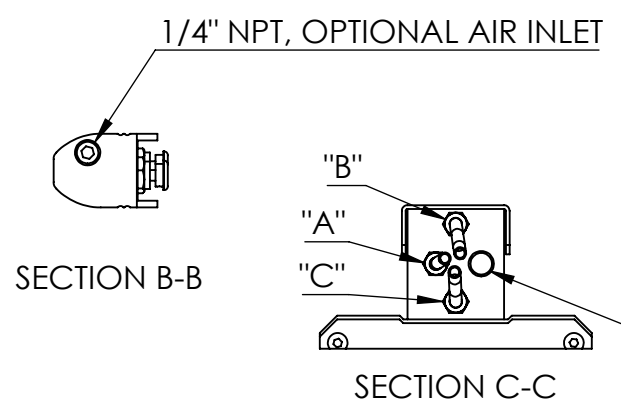
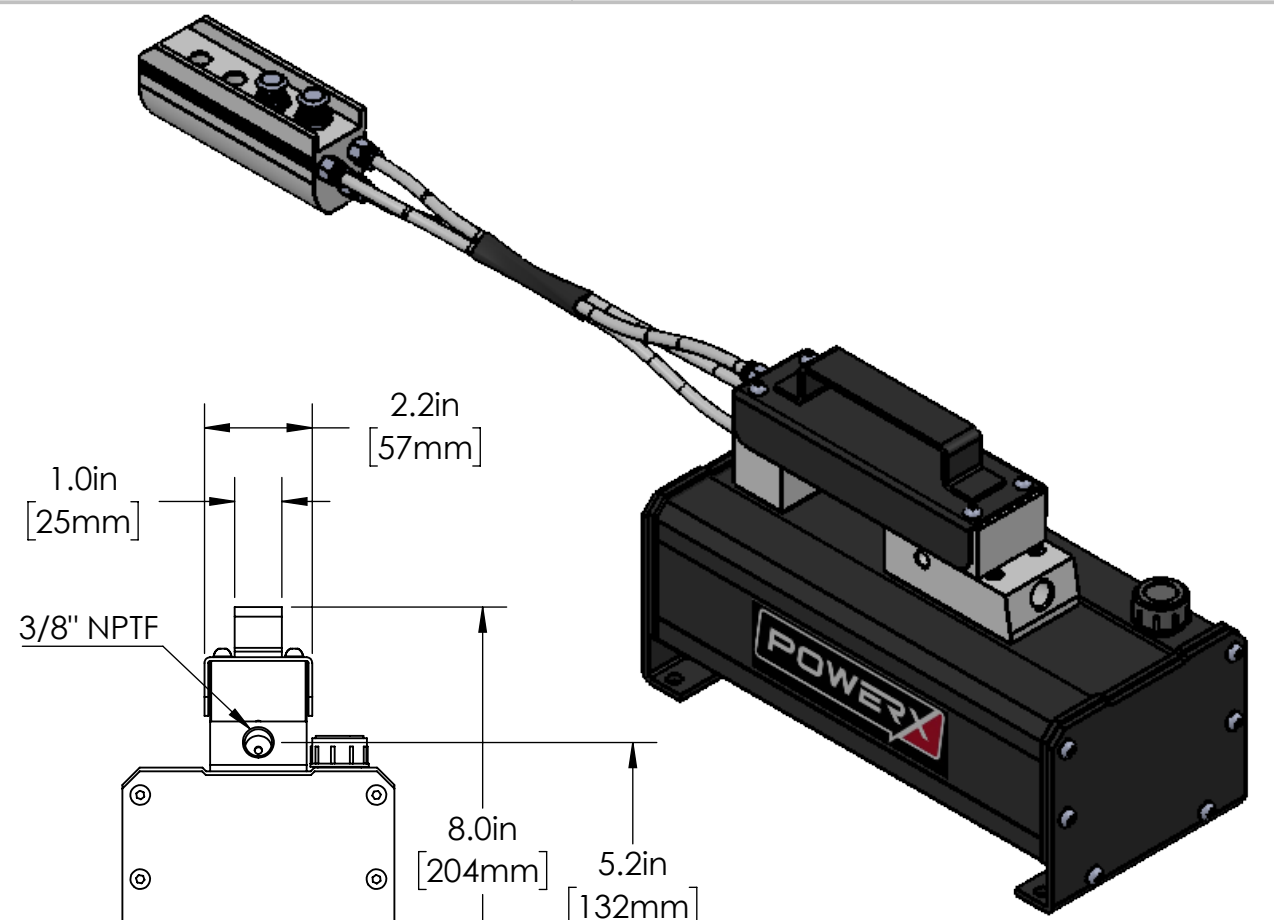
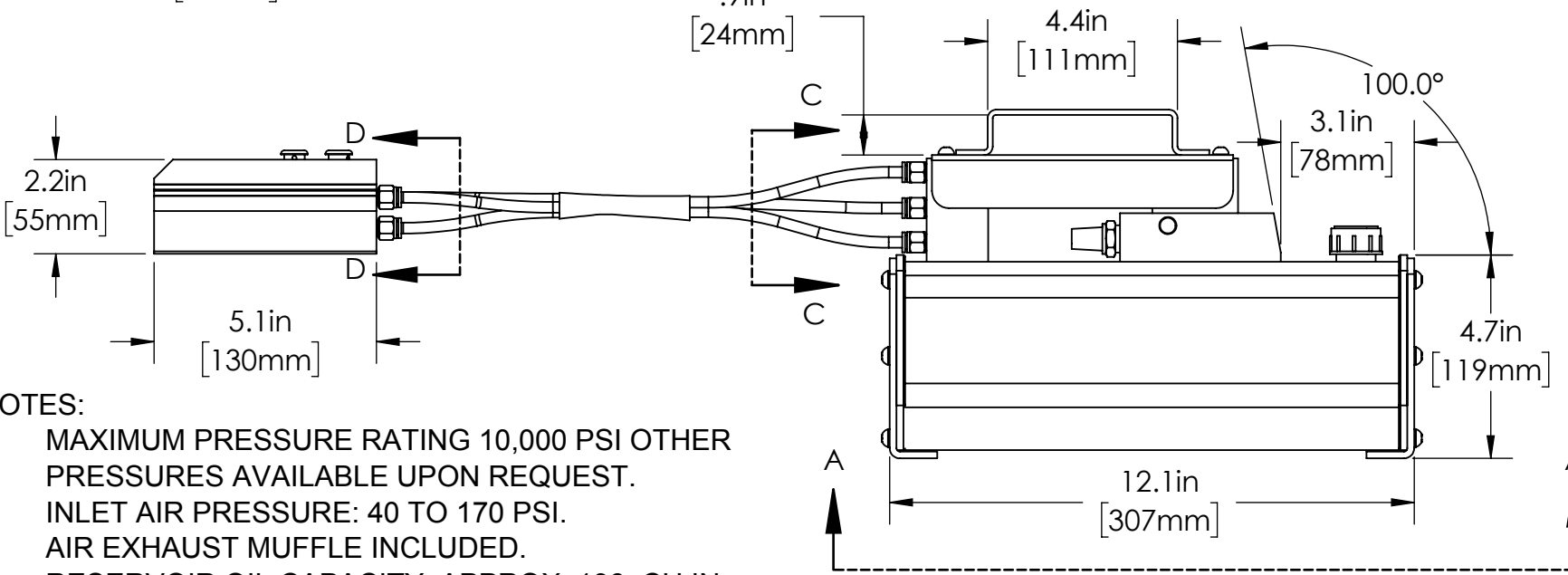
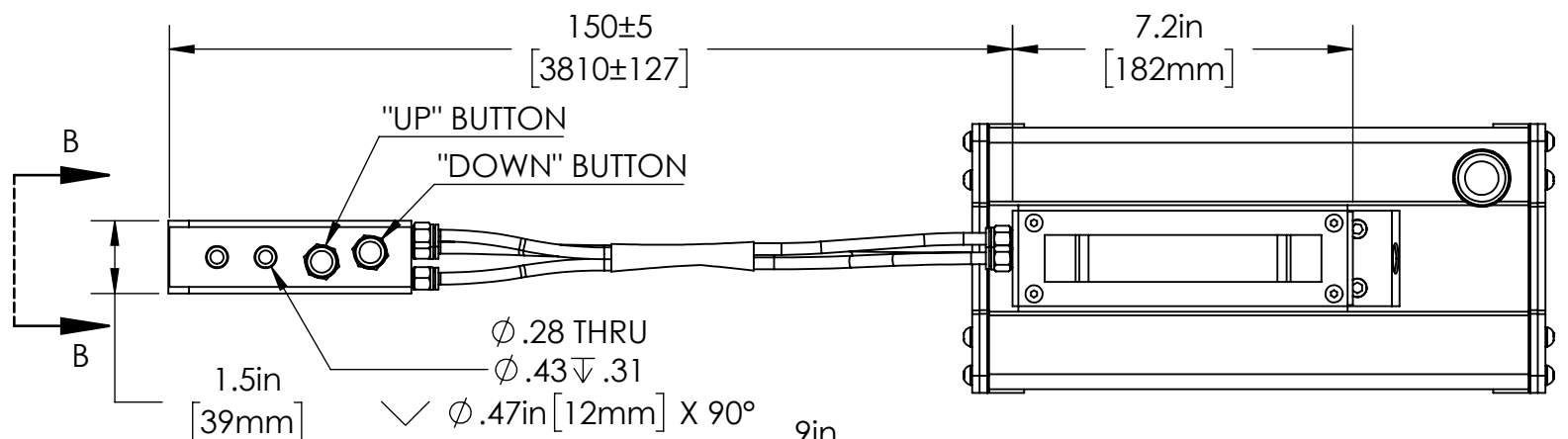


4

3

2

1



- NOTES:
1. MAXIMUM PRESSURE RATING 10,000 PSI OTHER PRESSURES AVAILABLE UPON REQUEST.
 2. INLET AIR PRESSURE: 40 TO 170 PSI.
 3. AIR EXHAUST MUFFLE INCLUDED.
 4. RESERVOIR OIL CAPACITY, APPROX. 136 CU.IN.
 5. USABLE OIL VOLUME APPROX. 98 CU.IN.
 6. OIL FLOW:
 1. NO LOAD: 82 CU.IN./MIN
 2. 10,000 PSI: 13 CU.IN./MIN
 7. RESERVOIR, EXTRUDED ALUMINUM ALLOY.
 8. RESERVOIR, TREDDLE, AND END CAPS ARE PAINTED OR ANODIZED BLACK.
 9. REMOTE PENDANT IS INCLUDED. HOSES ARE STRAINED WITH PERMINATE HOSE ENDS. ALL HOSES ARE PLACED IN AN ABRASION RESISTANT SLEEVING WITH HEST SHRANKED ENDS.
 10. WEIGHT: APPROX. 20 LBS, INCLUDING OIL.

UNLESS OTHERWISE SPECIFIED: DIMENSIONS ARE IN INCHES.		NAME	DATE
TOLERANCES: FRACTIONAL ±1/16 ANGLES ±1° ONE PLACES ±.050 (1.25mm) TWO PLACES ±.010 (.25mm) THREE PLACES ±.005 (.13mm) FINISH 125 MAX C/B .020		JJJ	07/17/18
DRAWN		JJJ	07/19/18
CHECKED			
ENG APPR.		JJJ	07/19/18
MFG APPR.			
Q.A.			
COMMENTS:			

POWERX

TITLE:
**INSTALLATION DRAWING
 PA6-98R**

SIZE	DWG. NO.	REV
B	PA6-98R - Install	A

SCALE: 1:4 WEIGHT: SHEET 1 OF 1

A	C18-07-078	7/19/2018	JJJ	RELEASE OF DRAWING	JJJ	7/19/18
REV.	ECN.	DATE	DRAWNBY	DESCRIPTION	APPROVED	APPR. DATE
REVISIONS						

THIRD ANGLE PROJECTION

PROPRIETARY AND CONFIDENTIAL

THE INFORMATION CONTAINED IN THIS DRAWING IS THE SOLE PROPERTY OF PowerX International. ANY REPRODUCTION IN PART OR AS A WHOLE WITHOUT THE WRITTEN PERMISSION OF PowerX International IS PROHIBITED.

DO NOT SCALE DRAWING

4

3

2

1